



Registration
 To register online for Summer Nature Camps, please visit www.bartlettparks.org. Once you are registered, please go to www.bartlettparks.org/naturecenter to download specific information and the Emergency/Information form, which you are required to bring on the first day of camp. For any questions concerning Nature Camps, please call the Bartlett Nature Center at 847-608-3100, Option 2.

Late Pick Up
 Parents/guardians will be required to pay a late pick up fee of \$5 if they are 1-10 minutes late; after 10 minutes the fee will be \$1 per minute until the child is picked up. The late fee is per child. The person picking up the child will be handed a late pick up slip by the child's instructor. The slip has to be signed by the person picking up the child and an invoice will be issued with the fee to be paid. Late fees are the responsibility of the parent/guardian, no matter who picks up the child.

Cell Phones
 The use of cell phones will only be allowed before or after leaving camp; phones should be kept in the camper's backpack. If there is an emergency, please notify the office and the camper will be located. The Bartlett Park District does not assume responsibility for lost, stolen, or broken items.



Slice of FUN for Everyone



Nature Summer Camps



Weeklong Specialized Mini-Camps
 May 29 - August 10



Held at the
 Bartlett Nature Center
 2054 W. Stearns Road
 James "Pate" Philip State Park
 847-608-3100, Option 2
www.bartlettparks.org/

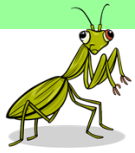


A Facility of the Bartlett Park District

Come and join us for a week of fun! Add more adventure to your child's summer with these amazing mini camps. If you are already enrolled in our summer camps, your child will be taken right over to this camp. Or just sign up for these camps alone. Even if your child is in other Nature Center summer camps, you will need to register for these camps. If your child is registered in our Nature Center day full camp, attends the Slice of FUN for Everyone Camps, and needs after camp, we will take them to after camp. You will not need to sign up for after camp if you have been in our all day Nature Camps then sign up for Slice of FUN for Everyone Camps.

All registration closes at 6pm Friday prior to camp.

Please have your camper bring a water bottle.



Ages 6-13 years

*(Archery—Ages 8-13 years)



Gardening — May 29-June 1	\$50
ID# 28512-01 Tuesday-Friday	3:15-4:30pm
Archery* — June 4-8	\$75
ID#28512-02 Monday-Friday	3:30-4:30pm
Outdoor Skills — June 11-15	\$50
ID#28512-03 Monday-Friday	3:15-4:30pm
Superhuman — June 18-22	\$50
ID#28512-04 Monday-Friday	3:15-4:30pm
Nature Exploration — June 25-29	\$50
ID#28512-05 Monday-Friday	3:15-4:30pm
Photography — July 2-6 (no camp July 4)	\$50
ID#28512-06 Mon, Tue, Thurs, Fri	3:15-4:30pm
DIY Crafts — July 9-13	\$50
ID#28512-07 Monday-Friday	3:15-4:30pm
Archery* — July 16-20	\$75
ID#28512-08 Monday-Friday	3:30-4:30pm
STEM — July 23-27	\$50
ID#28512-09 Monday-Friday	3:15-4:30pm
A Wrinkle of Time — July 30-August 3	\$50
ID#28512-10 Monday-Friday	3:15-4:30pm
Bartlett's Got Talent — August 6-10	\$75
ID#28512-11 Monday-Friday	3:30-4:30pm

Limits: 7/30 Archery Limits: 7/12

Slice of FUN for Everyone Nature Summer Camp Descriptions

Gardening

Learn the basics of starting a garden and gardening. We will design gardens for vegetables, wild flowers, and butterflies. You will get to take seeds home to plant in your own garden.



Archery (7yrs and up) [minimum 6 campers]

In this camp you will learn the eleven steps to archery success, including range set up, safety, equipment, proper technique, and dominant eye. You will also play archery games. All equipment is provided.

Outdoor Skills

Each day we will learn a new skill to help us be comfortable in the great outdoors. We will learn how to use a pocket knife the safe way, how to navigate using clues in nature, how to make a fire, which plants have beneficial uses, and how to track animals. At the end of the week, you will be skilled in the outdoors.

New! Superhuman

What would it be like to have super-hearing or super-strength? Learn about real superpowers in nature and explore what it would be like to have those powers and more. Use this information on your quest to create your own superhuman! Challenge yourself by building your own character and discover how awesome you can be.

Nature Exploration

Come explore nature and all it has to offer through nature crafts, games, and observing.

Photography

Have fun learning the basics of photography. We will teach you how to properly frame your subject, and how to adjust for lighting changes. We will also discuss ways to make your photos more creative. **Required: device capable of taking pictures.**

DIY Crafting

Create awesome crafts using different mediums. Each day we will work with different materials. Get your creative minds flowing in this fun camp.

STEM

STEM aims to foster inquiring minds, logical reasoning, and collaboration skills. Kids will have fun exploring and creating with our fun and educational projects.

New! A Wrinkle of Time

Travel through time and space with the Bartlett Nature Center as we dive into "A Wrinkle in Time". We'll learn about worm holes and time traveling through time and space just as Meg Murry does. Each day will be as exciting as the last as we discover what lies in outer space.

New! Bartlett's Got Talent

Do you sing, are you artistic, do you have that special sports move, maybe you juggle, or you have a different talent that you want to show off? Want to learn some cool new tricks? In this camp, everyone can embrace their unique skills, teach others how to do them, and learn some new things! On Friday we will have a mini talent show in the auditorium.

